



The Enamelist Society, Inc.  
Winter 2020 Workshops  
March 2 – 7, Santa Rosa, CA



## Prospectus

Following the success of our workshop series in the summer of 2018, the TES Board has planned additional, non-conference year workshops for 2020. The first series will be from March 2 – 7, 2020 in the Santa Rosa, CA area. There will be three 3-day workshops on March 2, 3 and 4; two workshops at the Chimera Art Space and one workshop at the KVO Industries Enamel Center Annex. This format will repeat on March 5, 6 and 7; see the schedule and information below.

### March 2 -4, 2020

Chimera Art	Amy Roper Lyons	Plique à Jour: Two Approaches
	Patricia Nelson	Image Transfers with Decals
KVO Annex	Janly Jaggard	Think Big, Porcelain Enamel Wall Panels

### March 5 – 7, 2020

Chimera Art	Amy Roper Lyons	Plique à Jour: Two Approaches
	Rebekah Laskin	Drawing and Painting with Enamels
KVO Annex	Alisa Looney	Large Scale Enamel Panels

### Registration

The registration form will be available and open on The Enamelist Society, Inc. website ([www.enamelistsociety.org](http://www.enamelistsociety.org)) at **12:00 PM (Eastern time) on Thursday, December 12, 2019.**

Tuition for these 3-day workshops will be \$520 plus a materials fee (not yet finalized). There will be an option to purchase a catered lunch each day on the registration form. For housing we have booked a block of rooms at the Fairfield Inn and Suites in Sebastopol, CA; the rate is \$158 per night plus taxes for rooms with 2 queen beds. A booking link and phone number will follow as we finalize these details.

Please contact the TES office with any questions, etc. Phone: 770-807-0142

## Workshop Descriptions

### **Plique à Jour: Two Approaches - Amy Roper Lyons** (this workshop will be presented twice)

March 2 - 4 and March 5 – 7, 2020

This workshop will explore the luminous, exciting technique of plique à jour. Students will create a silver framework and enamel the openings, resulting in a stained-glass effect.

Two alternative methods for creating the silver framework will be explored:

1) constructing and soldering a wire filigree, and 2) saw-piercing openings in silver sheet. Students will make a sample of each method. The openings in the framework will then be filled with transparent enamels and fired without a backing. In the furnace, only the physics of surface tension holds the molten glass in place.

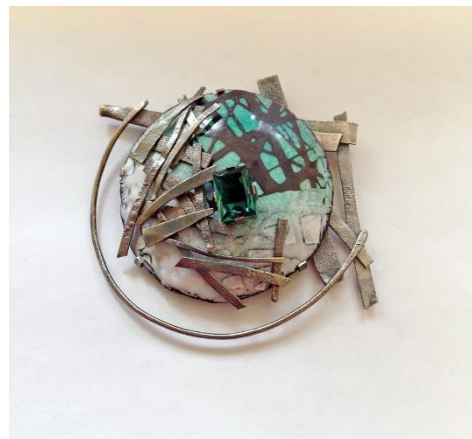


The workshop will cover the fabrication of the framework, the application of the enamel, special procedures for successful firing, and methods for finishing the work. Students will complete a pendant or pair of earrings. Beginners will gain an introduction to an exciting medium, and more experienced students will deepen their understanding.

### **Image Transfer with Decals - Patricia Nelson**

March 2 – 4, 2020

We are awash in imagery, thanks to new tools and technology - including our phones – and we can instantly capture images that were once cumbersome and difficult to obtain. We live in a world where deciphering images has become critical to our survival. In addition, image combinations and mashups can tell immediate stories, but can also yield narratives that are subtle, fictitious, and even paradoxical. We will harness some of that image development potential with decals, both commercial and handmade.



This workshop will include information about four types of decals; commercial ceramic decals, full color digital decals, laser printed decals, and screened decals. We will learn how to apply and fire these decals and cover information about which enamels work best as basecoats, which decals can be fired multiple times, and which can have additional coats of enamel and other decals fired on top in order to develop interesting layers of visual information. We will also cover decals used with cloisonné and champlevé.

## **Think Big, Porcelain Enamel Wall Panels - Janly Jaggard**

March 2 – 4, 2020 (KVO Annex)

This workshop will focus on aesthetics and the use of liquid porcelain enamel to create wall work that are likened to paintings.

Working on powder coated steel panels ranging in size from 6" - 36" the object of this opportunity is to work in new ways and discover more about what enamel can do. Experimentation through various methods for application using liquid enamel that can be sprayed, painted, stenciled and drawn with sgraffito are all options. The scale of composition of this larger scale work opens possibilities to experiment with simple techniques and the methods of work associated with painting.



## **Drawing and Painting with Enamels - Rebekah Laskin**

March 5 – 7, 2020 (Chimera Art)

This workshop explores various enameling techniques, which allow the artist to utilize the medium in a spontaneous, expressive and innovative way. Beginning and advanced students will learn basic application and controlled firing of enamel on metal as well as use of underglaze pencils and oxides, fine mesh sifting, stencils, foils, rubber stamps and stoning to achieve unique imagery and surfaces.

Participants will have the opportunity to utilize these processes on several sample enamel pieces. They will be encouraged to explore the limitless possibilities of this medium with the goal of finding unique and innovative uses for enamel in their own work. Methods of incorporating enamels into jewelry will be discussed.



## Express yourself with stunning detail on Large Scale Enamel Panels - Alisa Looney

March 5 - 7, 2020 (KVO Annex)

Set yourself free by combining granular spray, multiple layers of liquid enamel, sgraffito and painting techniques!

Achieve the fine detail you have dreamed of, with ease and control when drawing images, textures and patterns into the glass. Learn to apply liquid enamel using the granular and multi-layer spray methods resulting in a powdered finish that allows the grains to be dislodged individually and promotes freedom to work with virtually any drawing style. Experiment with several sgraffito tools to create varied line qualities and thicknesses, cross hatching, stippling, brushing and combing. This spray application of liquid enamel can handle multiple firings and can be used on both flat and 3 dimensional objects. Painting techniques with both Liquid and watercolor enamels will also be explored.



### Additional Information

There are a few details that we are still working to finalize and plan to have these completed early in 2020.

Materials and Supplies – we are finalizing the materials fees for each workshop as well as compiling the “student supply lists” of things you will need to bring with you. We will contact you later with the information and to get payments.

Daily schedules – we will plan for 9:00 AM to 5:00 PM with a 1-hour lunch break. We also hope to schedule a studio time slot after dinner, perhaps 7:00 – 9:00 PM, but this is a TBA right now.

Transportation – you will likely need a car (or carpool with someone). TES will have a van to help a few of you get from the hotel to the workshop venues but we do not have a shuttle service.